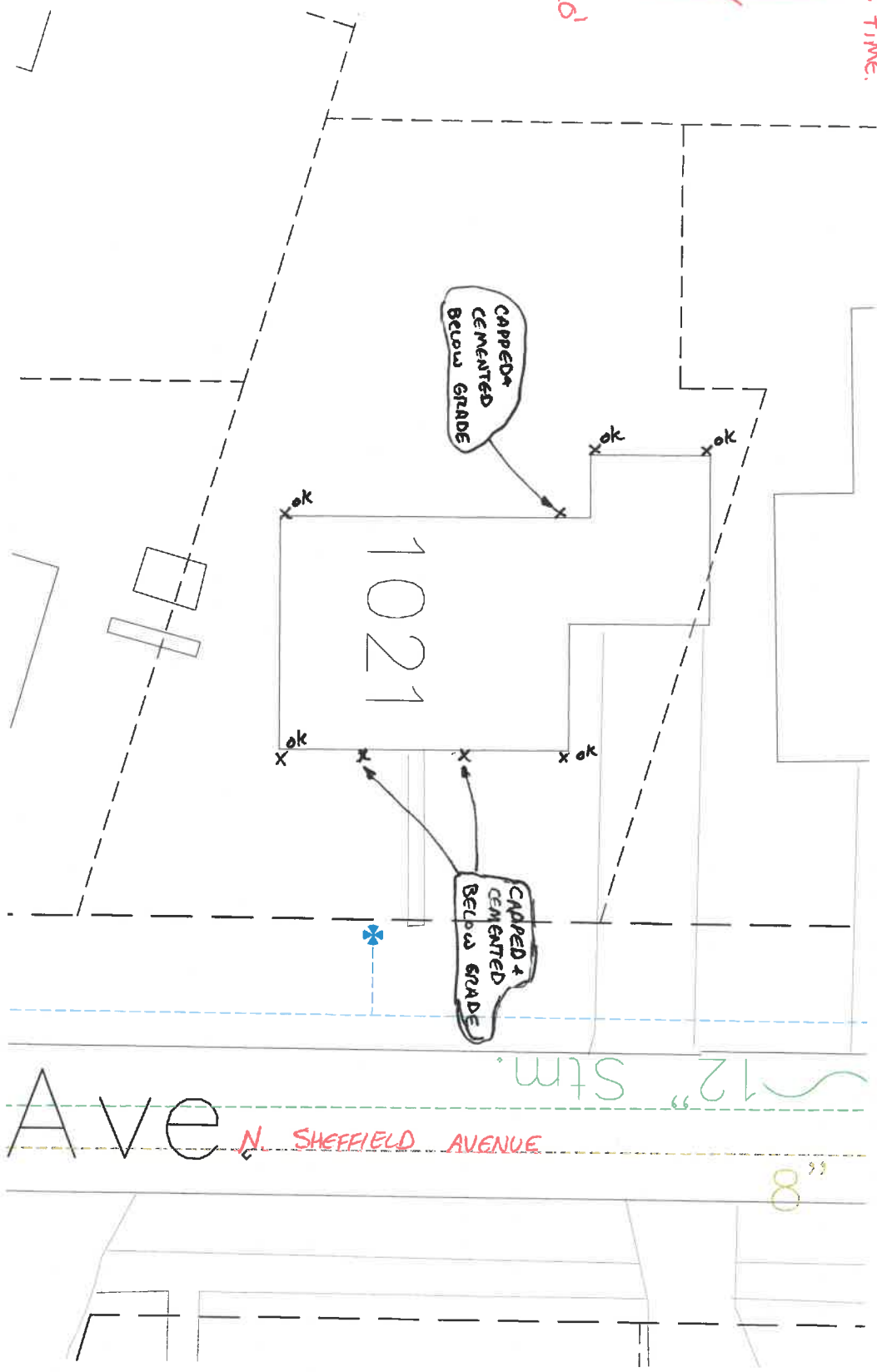


2015

INVESTIGATION OF ILLEGAL SEWER CONNECTIONS REVEALED THREE (3) ILLEGAL CONNECTIONS. ALL HAVE BEEN CORRECTED AND ARE IN COMPLIANCE AT THIS TIME.

1021 NORTH SHEFFIELD AVENUE



SCANNED